

---

# MODIS Ocean Processing in Hobart

Ken Suber, May 2004



# Outline

---

- Current processing setup
- S/W packages
- Porting issues
- Locally-produced S/W
- Some images

# Current processing setup

---

- Level1 1B files from Sentinel system
- Add metadata using our Tcl/caps scripts
- Run NASA Oceans Code, and/or SeaDAS, to produce Level 2 files
- Produce JPEGs for our web page
- Calibration issues
- Ancillary files

# S/W packages used

---

- Sentinel
- RT-STPS (requires java)
- IMAPP
- NASA Cloudmask program
- NASA MODSST program
- NASA MODCOL program
- SeaDAS
- HDFLook
- Tcl/caps

# Porting issues

---

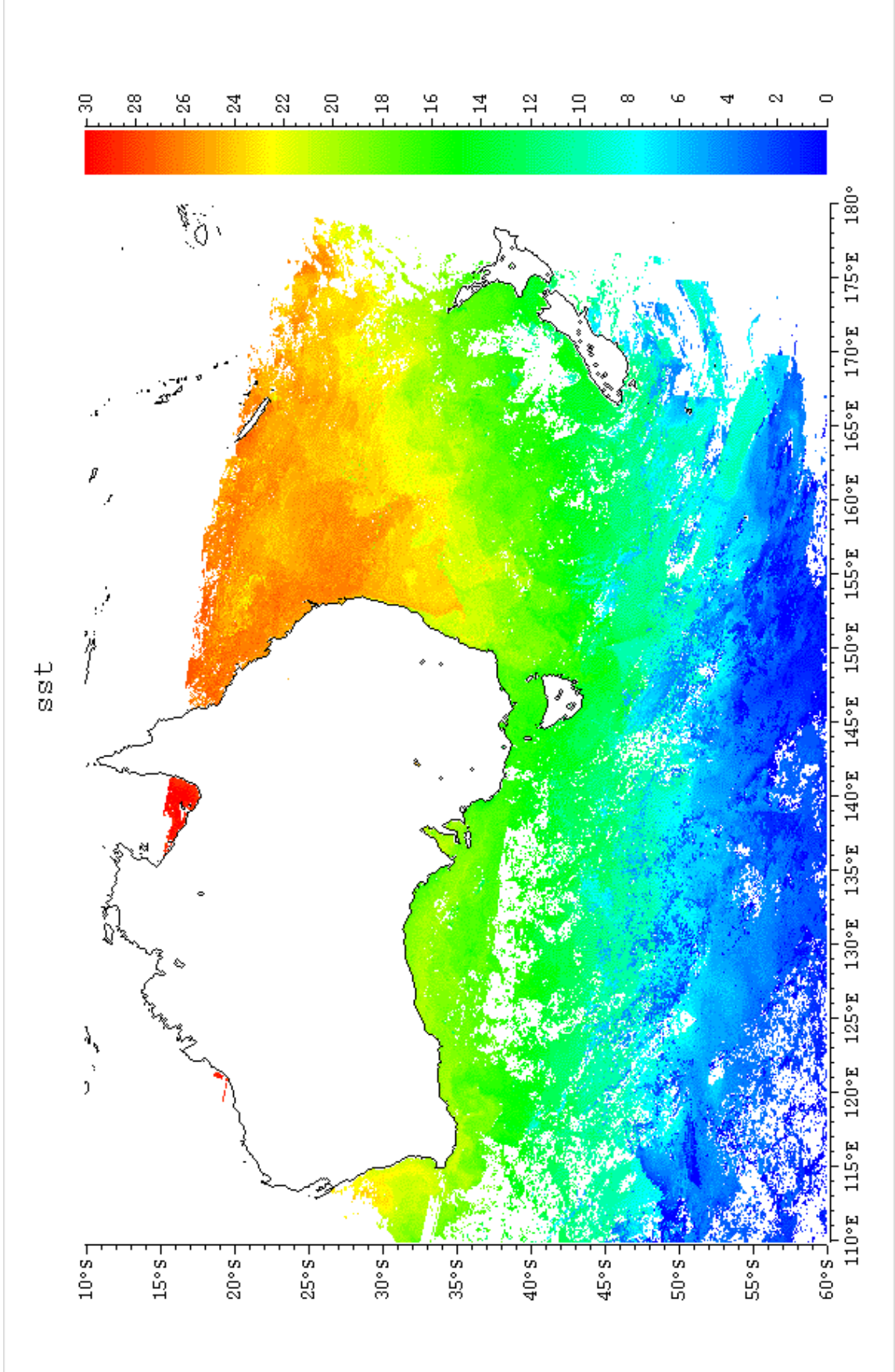
- IMAPP - to Solaris and linux
- NASA/S/W - to Solaris and linux; required some source code changes
- SeaDAS - using executables
- Tcl/caps - documentation?
- Local S/W – Hobart-specific, but flexible



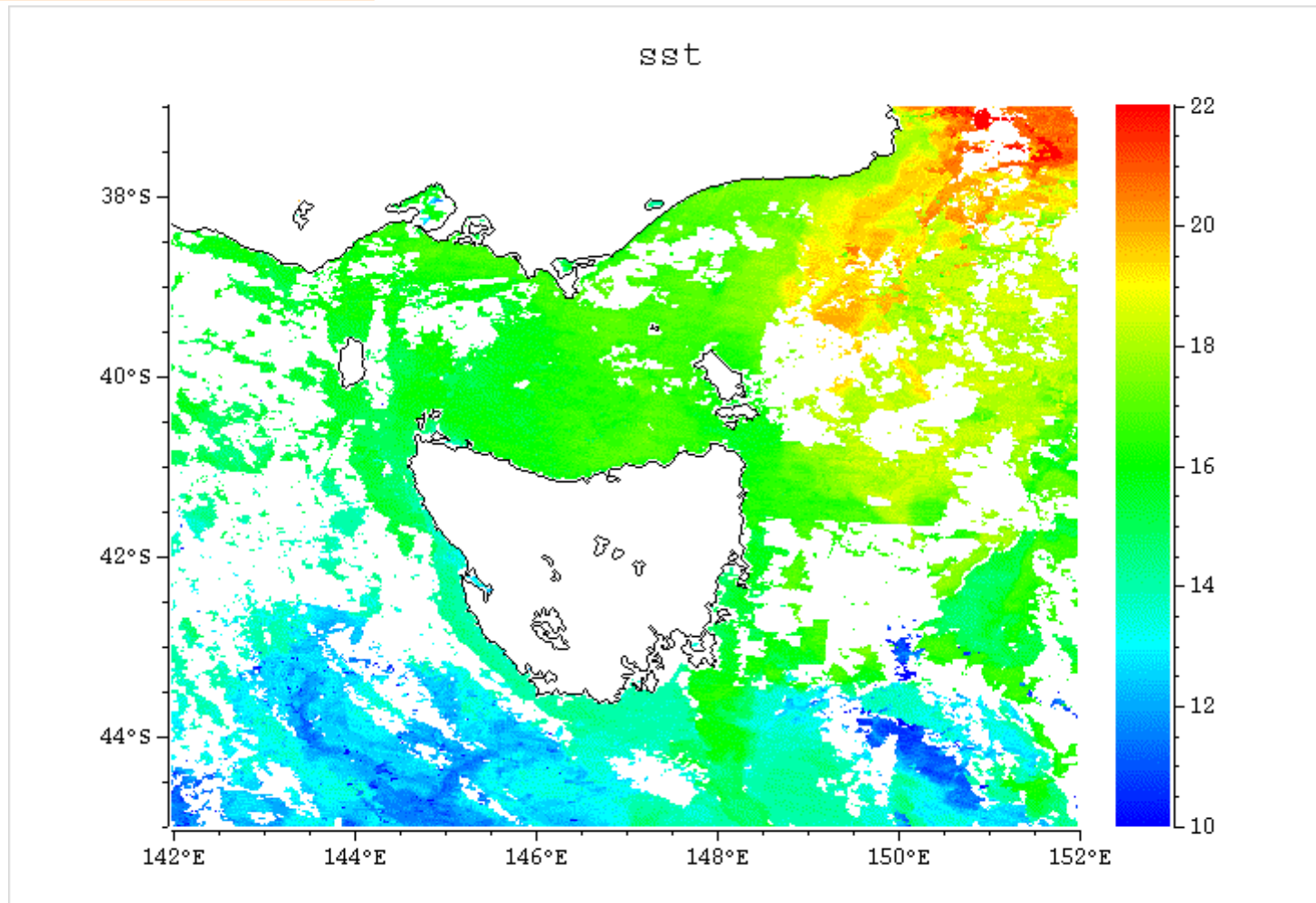
## Locally-produced S/W

---

- Scheduling and managing of processing with Bourne shell and Tcl/caps scripts
- Cron job to detect new pass
- Add metadata to level 1B files
- Check for and select ancillary files
- Create PCF files, for NASA programs

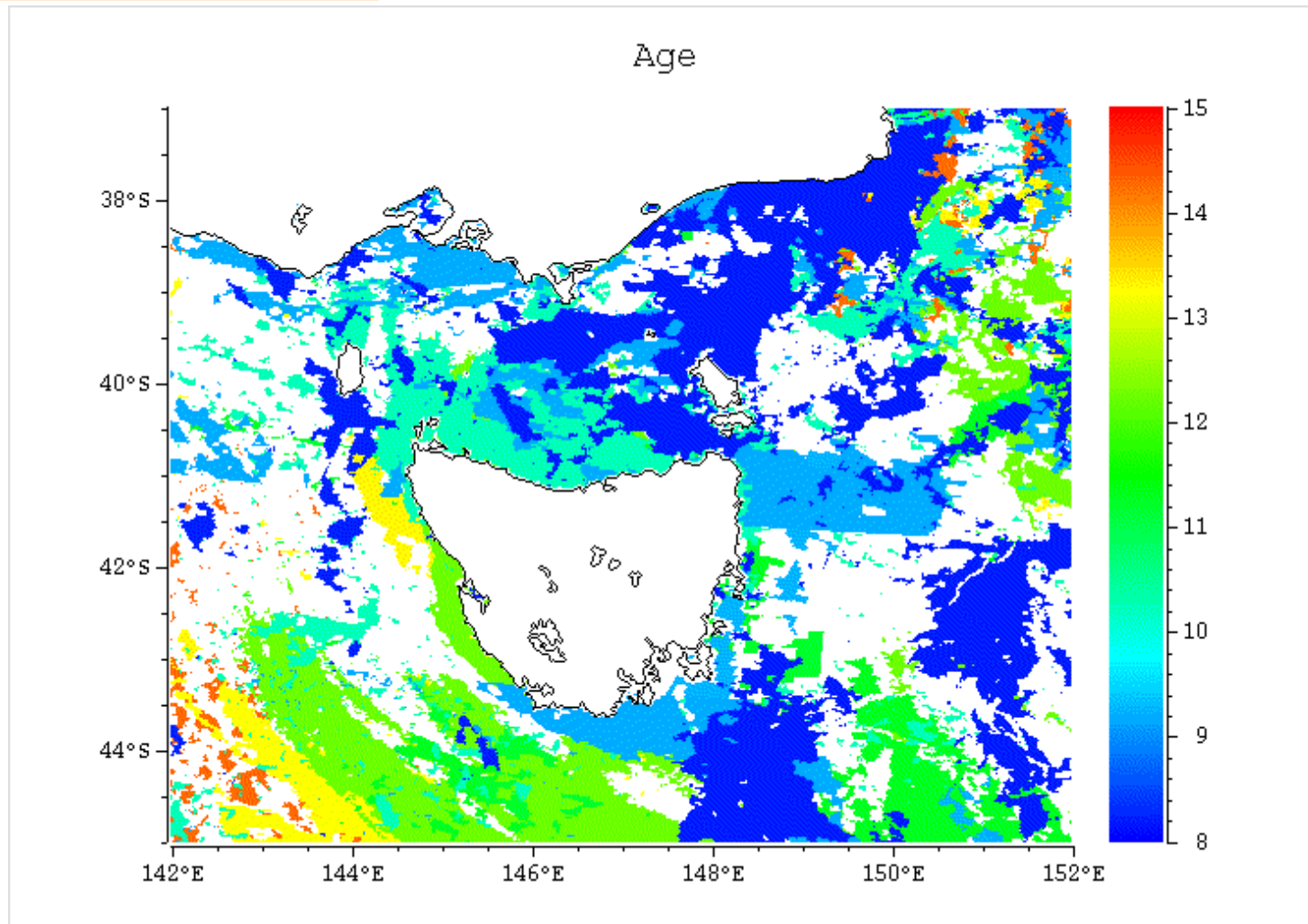


# Composite image, 23-30 April 2004

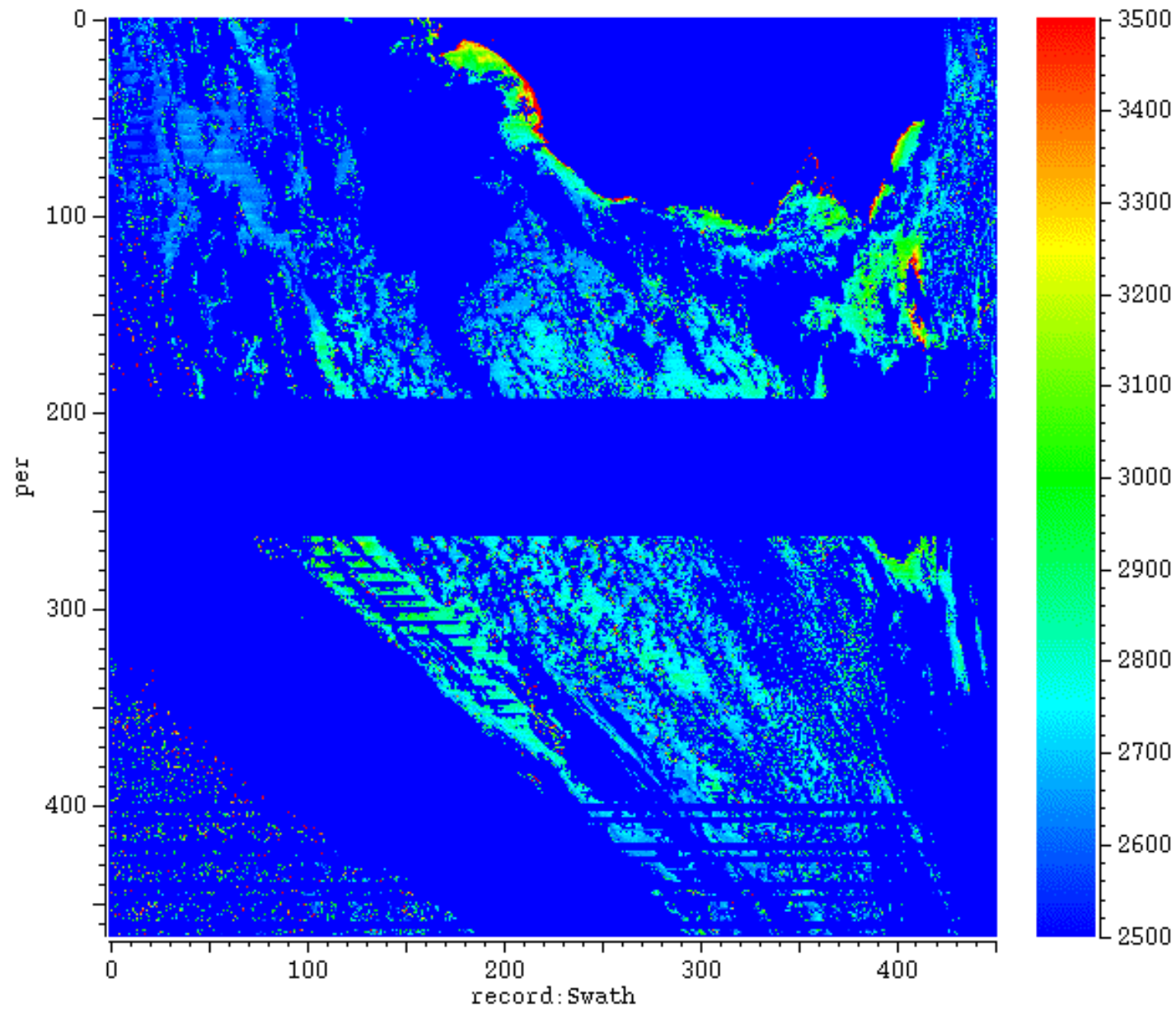


**CSIRO**  
MARINE RESEARCH

# Age of selected pixel, in days (since 7 May)



chlor\_MODIS



28 April 2004 0040Z



CSIRO

MARINE RESEARCH